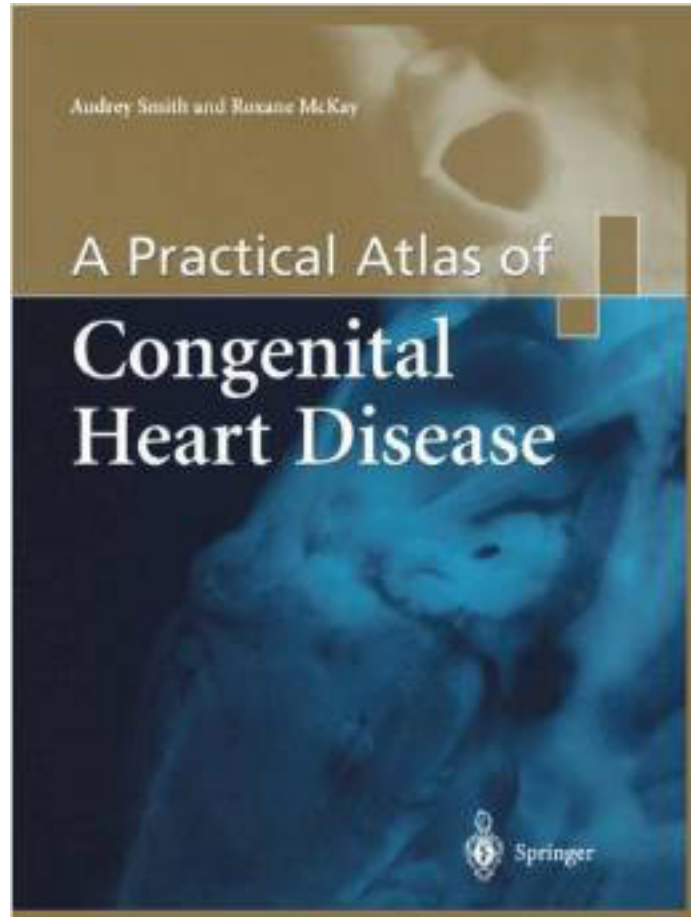


Presentation

Layout: 8,5 / 11 inches

215,90 mm x 279,40 mm



Georgia

Georgia

Georgiaqwertyuiopasdfghjklçzxcvbnm1234567890

Georgiaqwertyuiopasdfghjklçzxcvbnm1234567890

Georgiaqwertyuiopasdfghjklçzxcvbnm1234567890

Georgiaqwertyuiopasdfghjklçzxcvbnm1234567890

Verdana

Verdanaqwertyuiopasdfghjklçzxcvbnm1234567890

Verdanaqwertyuiopasdfghjklçzxcvbnm1234567890

Verdanaqwertyuiopasdfghjklçzxcvbnm1234567890

Verdanaqwertyuiopasdfghjklçzxcvbnm1234567890

Introduction

Developed to integrate cardiac anatomy with surgical repair by reviewing individual heart defects within an easy-to-follow reference format, *A Practical Atlas of Congenital Heart Disease* is designed to allow the reader to examine a congenitally malformed heart while referring to its anatomic and surgical description on a single page spread.

Simple line drawings are used to identify the **Bold diagnostic anatomic** features and to emphasize important surgical landmarks, *italic allowing readers to differentiate* the infinitely variable morphology in clinical practice. The anatomic pathologist will also gain an understanding of surgical repairs relative hearts.

For virtually all anatomical **Bold italic specimens** are shown in the anatomical position, while the surgical figures are shown as they would be seen operatively. *Italic color This enables the reader* to practice mental imaging of the morphologic and spatial relationships that are integral to every malformation, the action tissue is indicated.

R-83-88 inferior caval defect (remote postoperative). Right side. In this elderly, adult heart, a portion of the Eustachian valve has been sutured to the margin of an interatrial defect, which communicates the left atrium. The ostium of the coronary sinus is enlarged but in the usual position. A single chord of tissue represents the Thebesian valve. The tricuspid valve is present in an interatrial defect, which communicates the left atrium. The ostium of the coronary sinus is enlarged but in the usual position. A single chord of tissue represents the Thebesian valve. The tricuspid valve is present in an interatrial defect, which communicates the left atrium. The ostium of the coronary sinus is enlarged but in the usual position. A single chord of tissue represents the Thebesian valve.

Introduction 200%

Developed to integrate cardiac anatomy with surgical repair by reviewing individual heart defects within an easy-to-follow reference format, A Practic designed to allow the reader to examine a congenitally malformed heart while referring to its anatomic and surgical description on a single page spread.

Simple linentify the **Bold anatomic** features and to emphasize important surgical landmarks, *italic allowing readers to differentiate* the infinitely variable morphology in clinical practice. The anatomic pathologist will also gain an understanding of surgical repairs rative hearts.

For virmical ***Bold italic specimens*** are shown in the anatomical position, while the surgical figures are sratively. *Italic color This enables the reader* to practice mental imaging of the morphologic and spatial relationships that are inty every malformation, the uc-tion tissue is indicated.

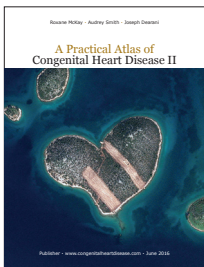
R-83-88 inferior caval defect (remote postoperative). Right side. In this elderly, adult heart, a portion of the Eustachian valve has been sutured to the margin of an interatrial defect, which lies below and separate from the intact oval fossa. Dehiscence of part of the suture line leaves a residual communication with the left atrium. The ostium of the coronary sinus is enlarged but in the usual position. A single chord of tissue represents the Thebesian valve. The tricuspid valve is thickened.

Roxane McKay · Audrey Smith · Joseph Dearani

A Practical Atlas of Congenital Heart Disease II



Publisher · www.congenitalheartdisease.com · June 2016



Cover

HEART ISLAND, GALESNJAK, CROATIA
February 16, 2013: This is a satellite image of Heart Island, Galesnjak, Croatia collected on February 16, 2013. (Photo DigitalGlobe / Getty Images)

Website

www.congenitalheartdisease.com

Facebook

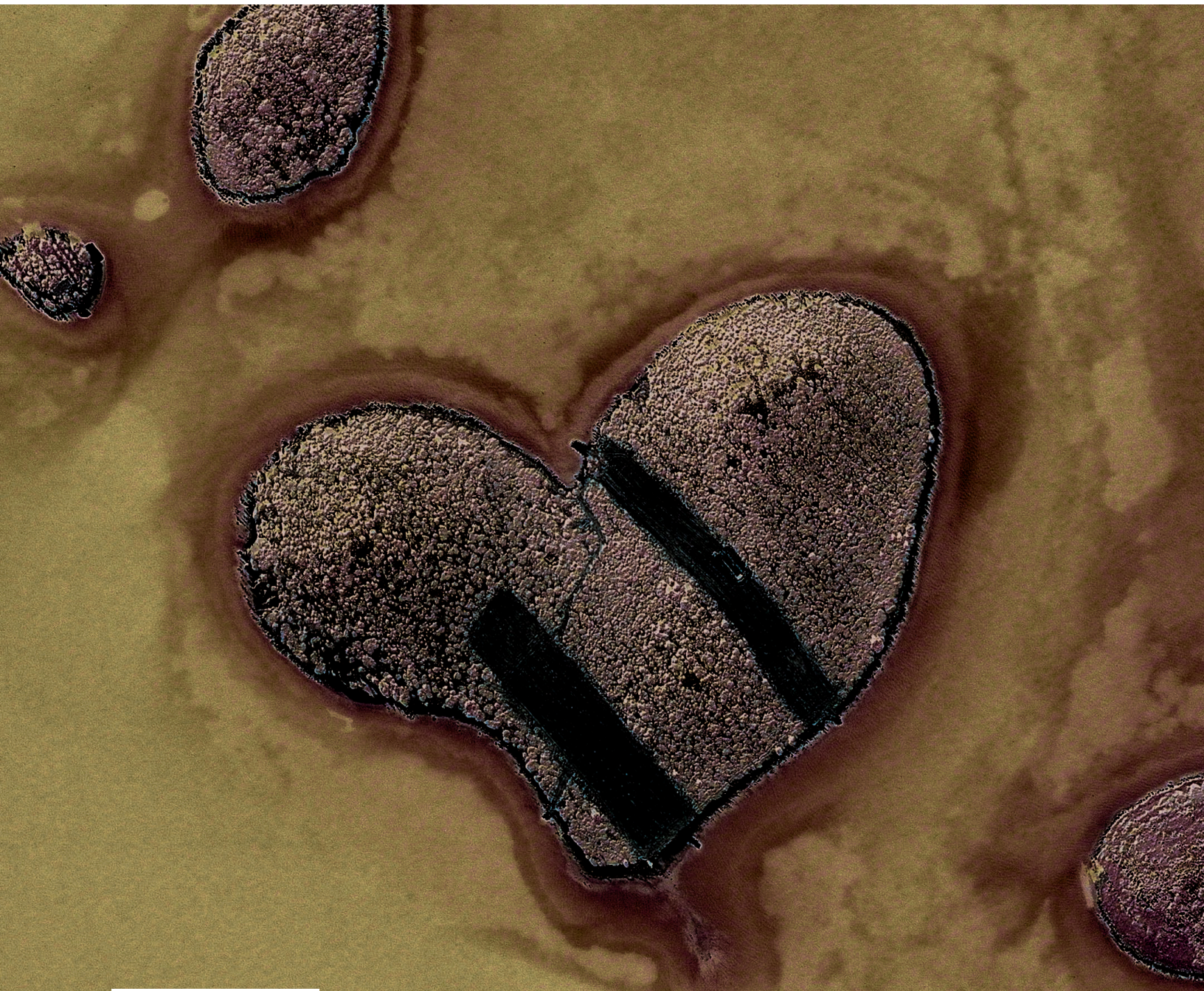
www.facebook.com/congenitalheartdisease.com

Cover

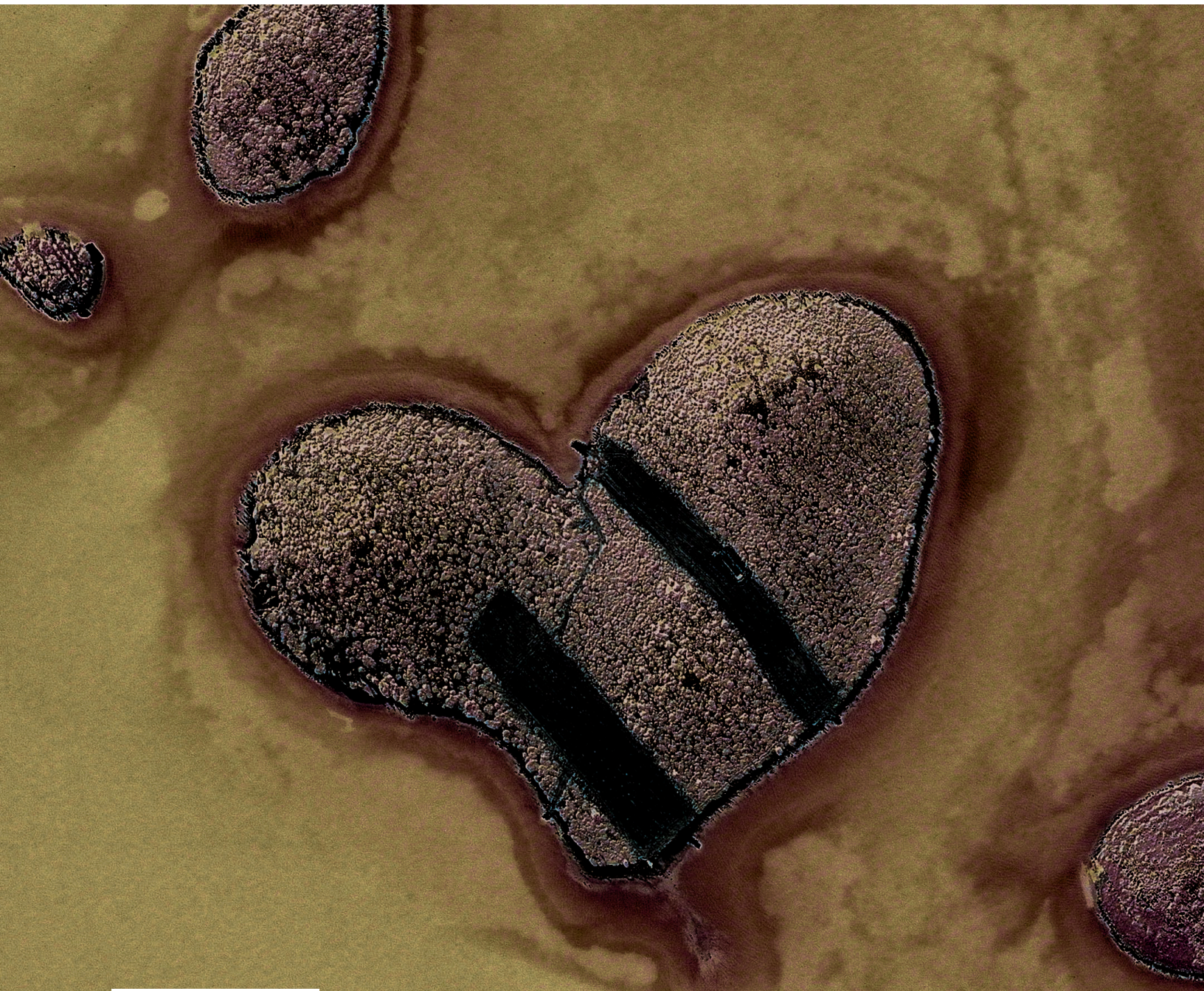
HEART ISLAND, GALESNJAK, CROATIA

February 16, 2013: This is a satellite image of Heart Island, Galesnjak, Croatia collected on February 16, 2013. (Photo DigitalGlobe / Getty Images)

R-83-88 Congenital Heart Disease II - In this elderly, adult heart, a portion of the Eustachian valve has been sutured to the margin of an interatrial defect, which lies below and separate from the intact oval fossa. Dehiscence of part of the suture line leaves a residual communication with the left atrium. The ostium of the coronary sinus is enlarged but in the usual position. A single chord of tissue represents the Thebesian valve. The tricuspid valve is thickened.



R-83-88 Congenital Heart Disease II - In this elderly, adult heart, a portion of the Eustachian valve has been sutured to the margin of an interatrial defect, which lies below and separate from the intact oval fossa. Dehiscence of part of the suture line leaves a residual communication with the left atrium. The ostium of the coronary sinus is enlarged but in the usual position. A single chord of tissue represents the Thebesian valve. The tricuspid valve is thickened.



Roxane McKay · Audrey Smith · Joseph Dearani

A Practical Atlas of Congenital Heart Disease II



Publisher · www.congenitalheartdisease.com · June 2016



Contents

4 Preface

Simple line drawings are used to identify the diagnostic anatomic features and to emp

6 Section 1 Extracardiac Anomalies of the Great Arteries

Simple line drawings are used to identify the diagnostic anatomic features and to emphasize imp

10 Section 2 Anomalies Related to the Atria

Simple line drawings are used to identify the diagnostic anatomic features and to emp

32 Section 3 Four-chambered Hearts with Concordant Atrioventricular and Ventriculo-arterial Connections

56 Section 4 Four-chambered Hearts with Abnormal Ventriculo-arterial Connections

Simple line drawings are used to identify the diagnostic anatomic features and to emp

120 Section 5 Hearts with Univentricular Atrioventricular Connection

Simple line drawings are used to identify the diagnostic anatomic features and to emp

Section 6
Coronary Arterial Anomalies

232

Section 7
Hearts with Univentricular Atrioventricular

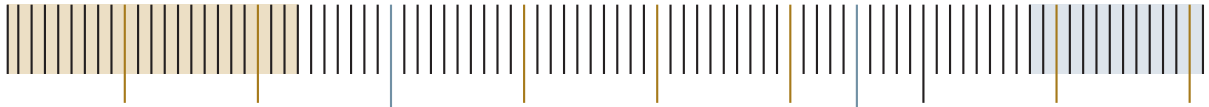
321

Section 8
Miscellaneous

364

450

1

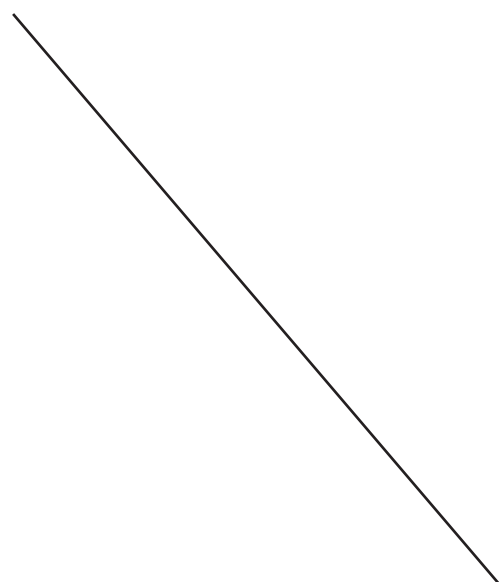


Section 1
Extracardiac Anomalies of the Great Arteries

Section 2
Anomalies Related to the Atria

30

65





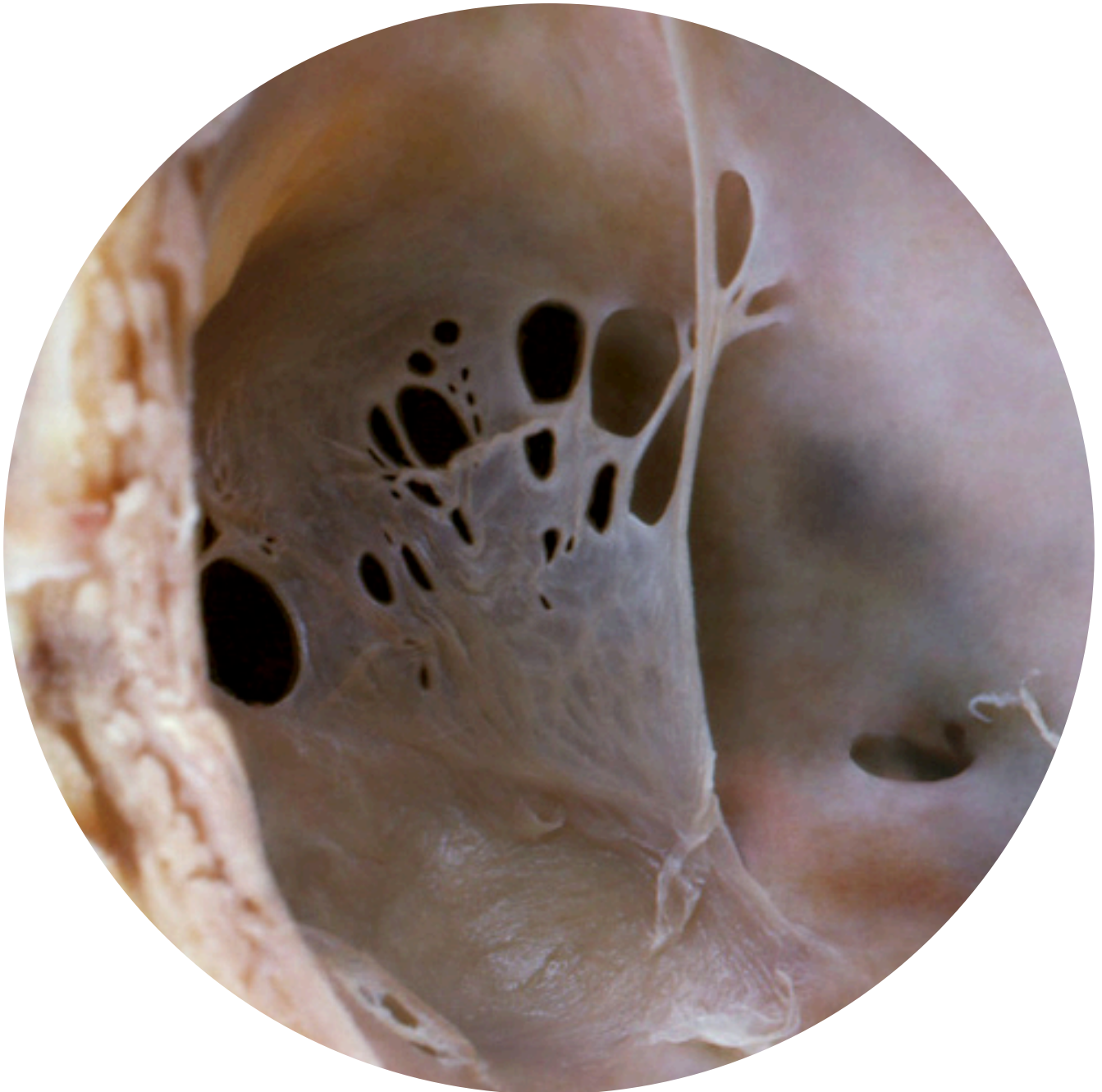
Preface

Developed to integrate cardiac anatomy with surgical repair by reviewing individual heart defects within an easy-to-follow reference format, *A Practical Atlas of Congenital Heart Disease* is designed to allow the reader to examine a congenitally malformed heart while referring to its anatomic and surgical description on a single page spread.

Simple line drawings are used to identify the diagnostic anatomic features and to emphasize important surgical landmarks, allowing readers to differentiate the infinitely variable morphology in clinical practice. The anatomic pathologist will also gain an understanding of surgical repairs of postoperative hearts. For virtually every malformation, the position of the specialized conduction tissue is indicated.

The book provides examples of malformations and the relevant surgical considerations, reflecting clinical practice: anatomical specimens are shown in the anatomical position, while the surgical figures are shown as they would be seen operatively. This enables the reader to practice mental imaging of the morphologic and spatial relationships that are integral to congenital heart surgery. In addition, some of the illustrated cases and morphology presented in these pages are themselves rare and sometimes unique examples of particular congenital heart malformations.

Section **1**
Extracardiac Anomalies of the Great Arteries



Introduction

Developed to integrate cardiac anatomy with surgical repair by reviewing individual heart defects within an easy-to-follow reference format, *A Practical Atlas of Congenital Heart Disease* is designed to allow the reader to examine a congenitally malformed heart while referring to its anatomic and surgical description on a single page spread.

Simple line drawings are used to identify the **diagnostic anatomic** features and to emphasize important surgical landmarks, allowing readers to differentiate the infinitely variable morphology in clinical practice. The anatomic pathologist will also gain an understanding of surgical repairs of postoperative hearts.

For virtual anatomical **specimens** are shown in the anatomical position, while the surgical figures are shown as they would be seen operatively. *This enables the reader* to practice mental imaging of the morphologic and spatial relationships that are integral to every malformation, the position of the specialized conduction tissue is indicated.

The book provides examples of malformations and the relevant surgical considerations, reflecting clinical practice: anatomical specimens are shown in the anatomical position, while the surgical figures are shown as they would be seen operatively. This enables the reader to practice mental imaging of the morphological specimens are shown in the anatomical position, while the surgical figures are shown as they would be seen operatively.

This enables the reader to practice mental imaging of the morphologic and spatial relationships that are integral to anatomical specimens are shown in the anatomical position, while the surgical figures are shown as they would be seen operatively. This enables the reader to practice mental imaging of the morphologic and spatial relationships that are integral to congenital heart surgery. In addition, some of the illustrated cases and morphology presented in these pages are themselves rare and sometimes unique examples of particular congenital heart malformations.

Simple line drawings are used to identify the diagnostic anatomic features and to emphasize important surgical landmarks, allowing readers to differentiate the infinitely variable morphology in clinical practice. The anatomic pathologist will also gain an understanding of surgical repairs of postoperative hearts. For virtual anatomical specimens are shown in the anatomical position, while the surgical figures are shown as they would be seen operatively. This enables the reader to practice mental imaging of the morphologic and spatial relationships that are integral to every malformation, the position of the specialized conduction tissue is indicated. The book provides examples of malformations and the relevant surgical considerations, reflecting clinical practice: anatomical specimens are shown in the anatomical position, while the surgical figures are shown as they would be seen operatively. This enables the reader to practice mental imaging of the morphological specimens are shown in the anatomical position, while the surgical figures are shown as they would be seen operatively.

Simple line drawings are used to identify the diagnostic anatomic features and to emphasize important surgical landmarks, allowing readers to differentiate the infinitely variable morphology in clinical practice. The anatomic pathologist will also gain an understanding of surgical repairs of postoperative hearts.

For virtual anatomical specimens are shown in the anatomical position, while the surgical figures are shown as they would be seen operatively. This enables the reader to practice mental imaging of the morphologic and spatial relationships that are integral to every malformation, the position of the specialized conduction tissue is indicated. The book provides examples of malformations and the relevant surgical considerations, reflecting clinical practice: anatomical specimens are shown in the anatomical position, while the surgical figures are shown as they would be seen operatively. This enables the reader to practice mental imaging of the morphological specimens are shown in the anatomical position, while the surgical figures are shown as they would be seen operatively.

This enables the reader to practice mental imaging of the morphologic and spatial relationships that are integral to anatomical specimens are shown in the anatomical position, while the surgical figures are shown as they would be seen operatively. This enables the reader to practice mental imaging of the morphologic and spatial relationships that are integral to congenital heart surgery. In addition, some of the illustrated cases and morphology presented in these pages are themselves rare and sometimes unique ex-

Section 2

Extracardiac Anomalies of the Great Arteries

Introduction

Developed to integrate cardiac anatomy with surgical repair by reviewing individual heart defects within an easy-to-follow reference format, *A Practical Atlas of Congenital Heart Disease* is designed to allow the reader to examine a congenitally malformed heart while referring to its anatomic and surgical description on a single page spread.

Simple line drawings are used to identify the diagnostic anatomic features and to emphasize important surgical landmarks, allowing readers to differentiate the infinitely variable morphology in clinical practice. The anatomic pathologist will also gain an understanding of surgical repairs of postoperative hearts.

For virtually anatomical specimens are shown in the anatomical position, while the surgical figures are shown as they would be seen operatively. This enables the reader to practice mental imaging of the morphologic and spatial relationships that are integral to every malformation, the position of the specialized conduction tissue is indicated.

The book provides examples of malformations and the relevant surgical considerations, reflecting clinical practice: anatomical specimens are shown in the anatomical position, while the surgical figures are shown as they would be seen operatively. This enables the reader to practice mental imaging of the morphological specimens are shown in the anatomical position, while the surgical figures are shown as they would be seen operatively.

This enables the reader to practice mental imaging

of the morphologic and spatial relationships that are anatomical specimens are shown in the anatomical position, while the surgical figures are shown as they would be seen operatively. This enables the reader to practice mental imaging of the morphologic and spatial relationships that are integral to congenital heart surgery. In addition, some of the illustrated cases and morphology presented in these pages are themselves rare and sometimes unique examples of particular congenital heart malformations.

Simple line drawings are used to identify the diagnostic anatomic features and to emphasize important surgical landmarks, allowing readers to differentiate the infinitely variable morphology in clinical practice. The anatomic pathologist will also gain an understanding of surgical repairs of postoperative hearts. For virtually anatomical specimens are shown in the anatomical position, while the surgical figures are shown as they would be seen operatively. This enables the reader to practice mental imaging of the morphologic and spatial relationships that are integral to every malformation, the position of the specialized conduction tissue is indicated.

Suggested Reading

The book provides examples of malformations and the relevant surgical considerations, reflecting clinical practice: anatomical specimens are shown in the anatomical position, while the surgical figures are shown as they would be seen operatively. This enables the reader to practice mental imaging of the morphological specimens are shown in the anatomical position, while the surgical figures are shown as they would be seen operatively.

This enables the reader to practice mental imaging of the morphologic and spatial relationships that are anatomical specimens are shown in the anatomical position, while the surgical figures are shown as they would be seen operatively. This enables the reader to practice mental imaging of the morphologic and spatial relationships that are integral to congenital heart surgery. In addition, some of the illustrated cases and morphology presented in these pages are themselves rare and sometimes unique examples of particular congenital heart malformations.

Simple line drawings are used to identify the diagnostic anatomic features and to emphasize impor-

tant surgical landmarks, allowing readers to differentiate the infinitely variable morphology in clinical practice. The anatomic pathologist will also gain an understanding of surgical repairs of postoperative hearts. For virtually anatomical specimens are shown in the anatomical position, while the surgical figures are shown as they would be seen operatively. This enables the reader to practice mental imaging of the morphologic and spatial relationship to examine a congenitally malformed heart while referring to its anatomic and surgical description on a single page spread.

Suggested Reading

Simple line drawings are used to identify the diagnostic anatomic features and to emphasize important surgical landmarks, allowing readers to differentiate the infinitely variable morphology in clinical practice. The anatomic pathologist will also gain an understanding of surgical repairs of postoperative hearts.

For virtually anatomical specimens are shown in the anatomical position, while the surgical figures are shown as they would be seen operatively. This enables the reader to practice mental imaging of the morphologic and spatial relationships that are integral to every malformation, the position of the specialized conduction tissue is indicated. The book provides examples of malformations and the relevant surgical considerations, reflecting clinical practice: anatomical specimens are shown in the anatomical position, while the surgical figures are shown as they would be seen operatively. This enables the reader to practice mental imaging of the morphologic and spatial relationships that are integral to congenital heart surgery. In addition, some of the illustrated cases and morphology presented in these pages are themselves rare and sometimes unique examples of particular congenital heart malformations.

Simple line drawings are used to identify the diagnostic anatomic features and to emphasize important surgical landmarks, allowing readers to differentiate the infinitely variable morphology in clinical practice. The anatomic pathologist will also gain an understanding of surgical repairs of postoperative hearts.

For virtually anatomical specimens are shown in the anatomical position, while the surgical figures are shown as they would be seen operatively. This enables the reader to practice mental imaging of the morphologic and spatial relationships that are integral to every malformation, the position of the specialized conduction tissue is indicated. The book provides examples of malformations and the relevant surgical considerations, reflecting clinical practice: anatomical specimens are shown in the anatomical position, while the surgical figures are shown as they would be seen operatively. This enables the reader to practice men-

tal imaging of the morphological specimens are shown in the anatomical position, while the surgical figures are shown as they would be seen operatively.

This enables the reader to practice mental imaging of the morphologic and spatial relationships that are integral to congenital heart surgery. In addition, some of the illustrated cases and morphology presented in these pages are themselves rare and sometimes unique examples of particular congenital heart malformations.

Simple line drawings are used to identify the diagnostic anatomic features and to emphasize important surgical landmarks, allowing readers to differentiate the infinitely variable morphology in clinical practice. The anatomic pathologist will also gain an understanding of surgical repairs of postoperative hearts. For virtually anatomical specimens are shown in the anatomical position, while the surgical figures are shown as they would be seen operatively. This enables the reader to practice mental imaging of the morphologic and spatial relationships that are integral to every malformation, the position of the specialized conduction tissue is indicated.

The book provides examples of malformations and the relevant surgical considerations, reflecting clinical practice: anatomical specimens are shown in the anatomical position, while the surgical figures are shown as they would be seen operatively. This enables the reader to practice mental imaging of the morphological specimens are shown in the anatomical position, while the surgical figures are shown as they would be seen operatively.

This enables the reader to practice mental imaging of the morphologic and spatial relationships that are integral to congenital heart surgery. In addition, some of the illustrated cases and morphology presented in these pages are themselves rare and sometimes unique examples of particular congenital heart malformations.

Simple line drawings are used to identify the diagnostic anatomic features and to emphasize important surgical landmarks, allowing readers to differentiate the infinitely variable morphology in clinical practice. The anatomic pathologist will also gain an

Developed to integrate cardiac anatomy with surgical repair by reviewing individual heart defects within an easy-to-follow reference format, A Practical Atlas of Congenital Heart Disease is designed to allow the reader to examine a congenitally malformed heart while referring to its anatomic and surgical description on a single page spread. [1]

Developed to integrate cardiac anatomy with surgical repair by reviewing individual heart defects within an easy-to-follow reference format, A Practical Atlas of Congenital Heart Disease is designed to allow the reader to examine a congenitally malformed heart while referring to its anatomic and surgical description on a single page spread. [2]

Simple line drawings are used to identify the diagnostic anatomic features and to emphasize important surgical landmarks, allowing readers to differentiate the infinitely variable morphology in clinical practice. The anatomic pathologist will also gain an understanding of surgical repairs of postoperative hearts. For virtually every malformation, the position of the specialized conduction tissue is indicated.

The book provides examples of malformations and the relevant surgical considerations, reflecting clinical practice: anatomical specimens are shown in the anatomical position, while the surgical figures are shown as they would be seen operatively. This enables the reader to practice mental imaging of the morphologic and spatial relationships that are integral to congenital heart surgery. In addition, some of the illustrated cases and morphology presented in these pages are themselves rare and sometimes unique examples of particular congenital heart malformations. In addition, some of the illustrated cases and morphology presented in these pages are themselves rare and sometimes unique examples of particular congenital heart malformations. In addition, some of the illustrated cases and morphology presented in these pages are themselves rare and sometimes unique examples of particular congenital heart malformations. In addition, some of the illustrated cases and morphology presented in these pages are themselves rare and sometimes unique examples of particular congenital heart malformations.

1 Congenital heart surgery. In addition, some of the illustrated cases and morphology presented in these pages are themselves rare and sometimes unique examples of particular congenital heart malformations.

2 Simple line drawings are used to identify the diagnostic anatomic features and to emphasize important surgical landmarks, allowing readers to differentiate the infinitely variable morphology in clinical practice.

The anatomic pathologist will also gain an understanding of surgical repairs of postoperative hearts. For virtually every malformation, the position of the specialized conduction tissue is indicated.

The book provides examples of malformations and the relevant surgical considerations, reflecting clinical practice: anatomical specimens are shown in the anatomical position, while the surgical figures are shown as they would be seen operatively. This enables the reader to practice mental imaging of the morphologic and spatial relationships that are integral to congenital heart surgery. In addition, some of the illustrated cases and morphology presented in these pages are themselves rare and sometimes unique examples of particular congenital heart malformations. In addition, some of the illustrated cases and morphology presented in these pages are themselves rare and sometimes unique examples of particular congenital heart malformations. In addition, some of the illustrated cases and morphology presented in these pages are themselves rare and sometimes unique examples of particular congenital heart malformations. In addition, some of the illustrated cases and morphology presented in these pages are themselves rare and sometimes unique examples of particular congenital heart malformations.

The book provides examples of malformations and the relevant surgical considerations, reflecting clinical practice: anatomical specimens are shown in the anatomical position, while the surgical figures are shown as they would be seen operatively. This enables the reader to practice mental imaging of the morphologic and spatial relationships that are integral to congenital heart surgery. In addition, some of the illustrated cases and morphology presented in these pages are themselves rare and sometimes unique examples of particular congenital heart malformations. In addition, some of the illustrated cases and morphology presented in these pages are themselves rare and sometimes unique examples of particular congenital heart malformations. In addition, some of the illustrated cases and morphology presented in these pages are themselves rare and sometimes unique examples of particular congenital heart malformations.

The book provides examples of malformations and the relevant surgical considerations, reflecting clinical practice: anatomical specimens are shown in the anatomical position, while the surgical figures are shown as they would be seen operatively. This enables the reader to practice mental imaging of the morphologic and spatial relationships that are integral to congenital heart surgery. In addition, some of the illustrated cases and morphology presented in these pages are themselves rare and sometimes unique examples of particular congenital heart malformations. In addition, some of the illustrated cases and morphology presented in these pages are themselves rare and sometimes unique examples of particular congenital heart malformations. In addition, some of the illustrated cases and morphology presented in these pages are themselves rare and sometimes unique examples of particular congenital heart malformations.

The book provides examples of malformations and the relevant surgical considerations, reflecting clinical practice: anatomical specimens are shown in the ana-

Developed to integrate cardiac anatomy with surgical repair by reviewing individual heart defects within an easy-to-follow reference format for an understanding of surgical repairs of postoperative hearts. For virtually every malformation, A Practical Atlas of Congenital Heart Disease is designed to allow the reader to examine a congenitally malformed heart while referring to its anatomic and surgical description on a single page spread. ^[1]

Developed to integrate cardiac anatomy with surgical repair by reviewing individual heart defects within an easy-to-follow reference format, A Practical Atlas of Congenital Heart Disease is designed to allow the reader to examine a congenitally malformed heart while referring to its anatomic and surgical description on a single page spread. ^[2]

Simple line drawings are used to identify the diagnostic anatomic features and to emphasize important surgical landmarks, allowing readers to differentiate the infinitely variable morphology in clinical practice. The anatomic pathologist will also gain an understanding of surgical repairs of postoperative hearts. For virtually every malformation, the position of the specialized conduction tissue is indicated.

Examples of malformations and the relevant surgical considerations, reflecting clinical practice: anatomical specimens are shown in the anatomical position, while the surgical figures are shown as they would be seen operatively. This understanding of surgical repairs of postoperative hearts. For virtually every malformation, the position of the specialized conduction tissue is indicated.

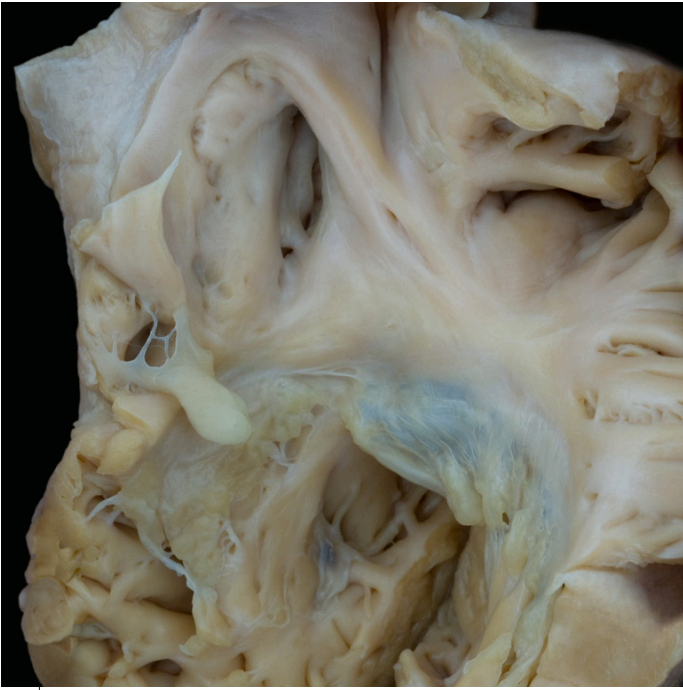
Provides examples of malformations and the relevant surgical considerations, reflecting clinical practice: anatomical specimens are shown in the anatomical position, while the surgical figures are shown as they would be seen operatively. This enables the reader to practice mental imaging of the morphologic and spatial relationships that are integral to congenital heart surgery. In addition, some of the illustrated cases and morphology presented in theaging of the morphologic and spatial relationships that are integral to congenital heart surgery. In addition, some of the illustrated cases and morphology presented in understanding of surgical repairs of postoperative hearts. For virtually every malformation, the position of the specialized conduction tissue is indicated.

The book provides examples of malformations and the relevant surgical considerations, reflecting clinical practice: anatomical specimens are shown in the anatomical position, while the surgical figures are shown as they would be seen operatively. This enables the reader to practice mental imaging of the morphologic and spatial relationships that are integral to congenital heart surgery. In addition, some of the illustrated cases and morphology presented in theaging of the morphologic and spatial relationships that are integral to congenital heart surgery. In addition, some of the illustrated cases and morphology presented in understanding of surgical repairs of postoperative hearts. For virtually every malformation, the position of the specialized conduction tissue is indicated.

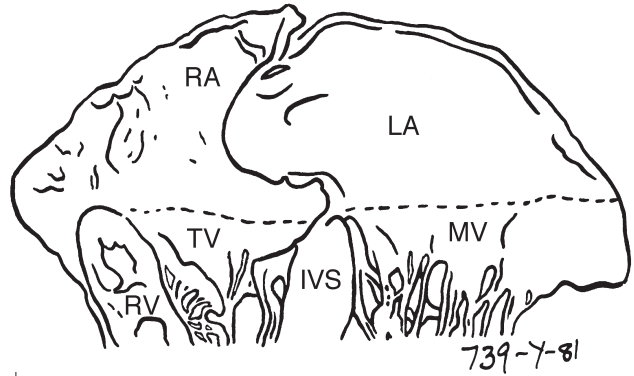
Enables the reader to practice mental imaging of the morphologic and spatial relationships that are integral to congenital heart surgery. In addition, some of the illustrated cases and morphology presented in theaging of the morphologic and spatial relationships that are integral to congenital heart surgery. In addition, some of the illustrated cases and morphology presented inables the reader to practice mental imaging of the morphologic and spatial relationships that are integral to congenital heart surgery. In addition, some of the illustrated cases and morphology presented in theaging of the morphologic and spatial relationships that are integral to congenital heart surgery. In addition, some of the illustrated cases and morphology presented in these pages are themselves rare and sometimes unique examples of particular congenital heart malformations. ate the infinitely

¹ Congenital heart surgery. In addition, some of the illustrated cases and morphology presented in these pages are themselves rare and sometimes unique examples of particular congenital heart malformations.

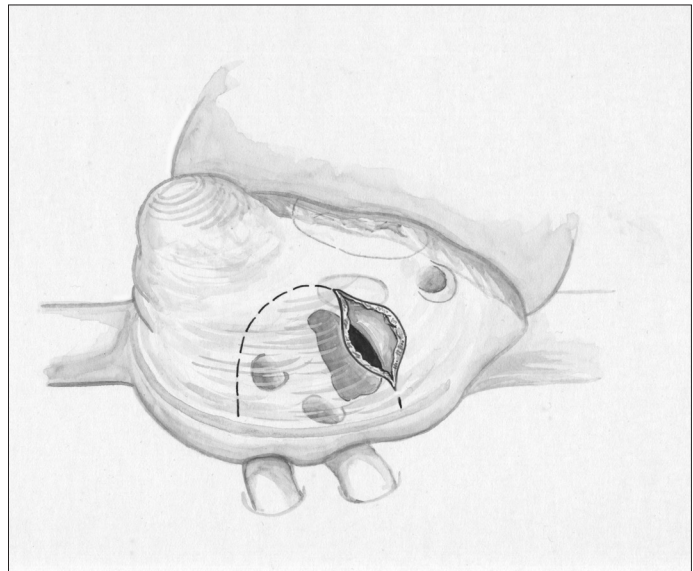
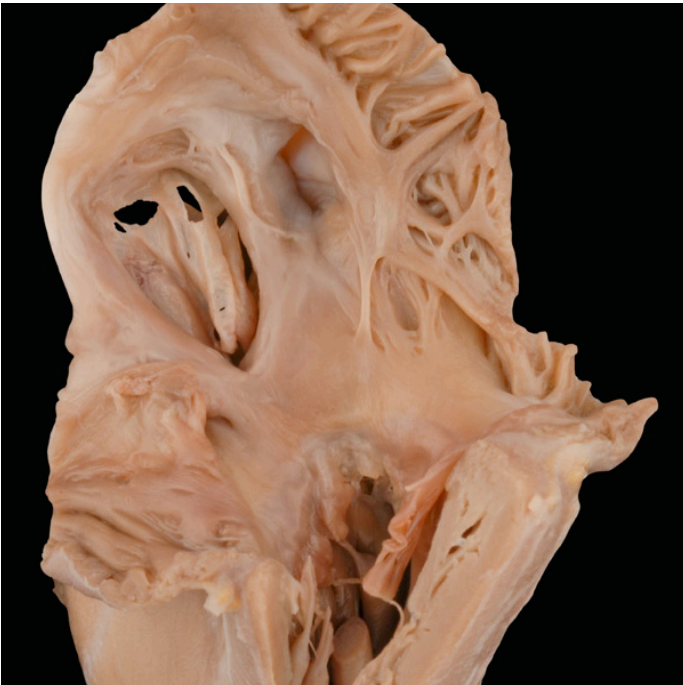
² Simple line drawings are used to identify the diagnostic anatomic features and to emphasize important surgical landmarks, allowing readers to differentiate the infinitely variable morphology in clinical practice.



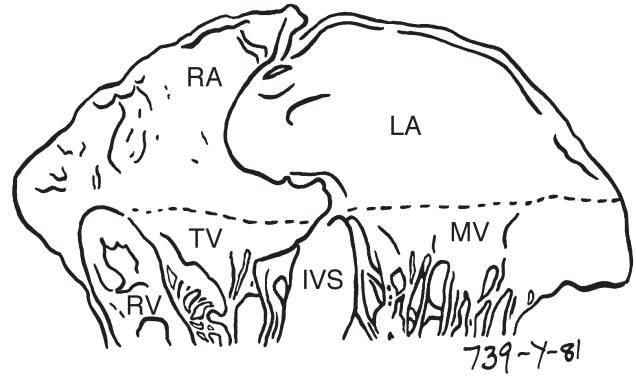
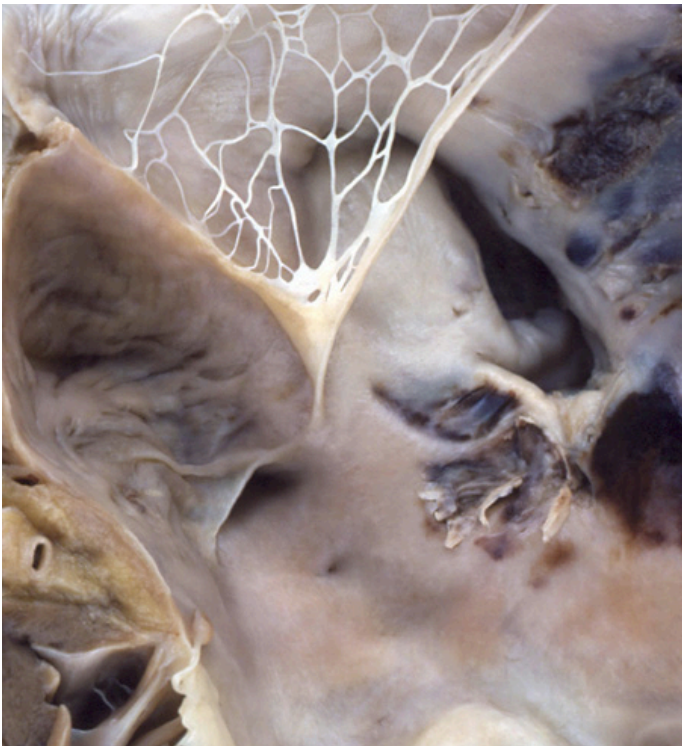
R-83-88 inferior caval defect (remote postoperative). Right side. In this elderly, adult heart, a portion of the Eustachian valve has been sutured to the margin of an interatrial defect, which lies below and separate from the intact oval fossa. Dehiscence of part of the suture line leaves a residual communication with the left atrium. The ostium of the coronary sinus is enlarged but in the usual position. A single chord of tissue represents the Thebesian valve. The tricuspid valve is thickened.



R-83-88 inferior caval defect (remote postoperative). Right side. In this elderly, adult heart, a portion of the Eustachian valve has been sutured to the margin of an interatrial defect, which lies below and separate from the intact oval fossa. The ostium of the coronary sinus is enlarged but in the usual position. A single chord of tissue represents the Thebesian valve. The tricuspid valve is

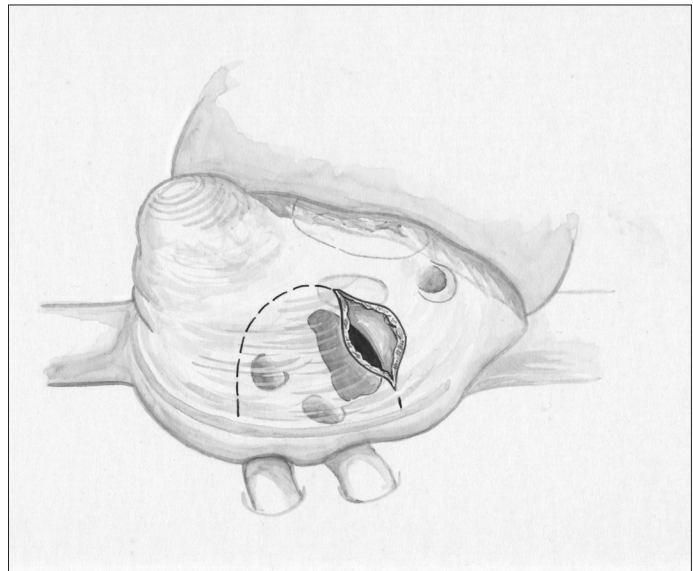


R-83-88 inferior caval defect (remote postoperative). Right side. In this elderly, adult heart, a portion of the Eustachian valve has been sutured to the margin of an interatrial defect, which lies below and separate from the intact oval fossa. Dehiscence of part of the suture line leaves a residual communication with the left atrium. The ostium of the coronary sinus is enlarged but in the usual position. A single chord of tissue represents



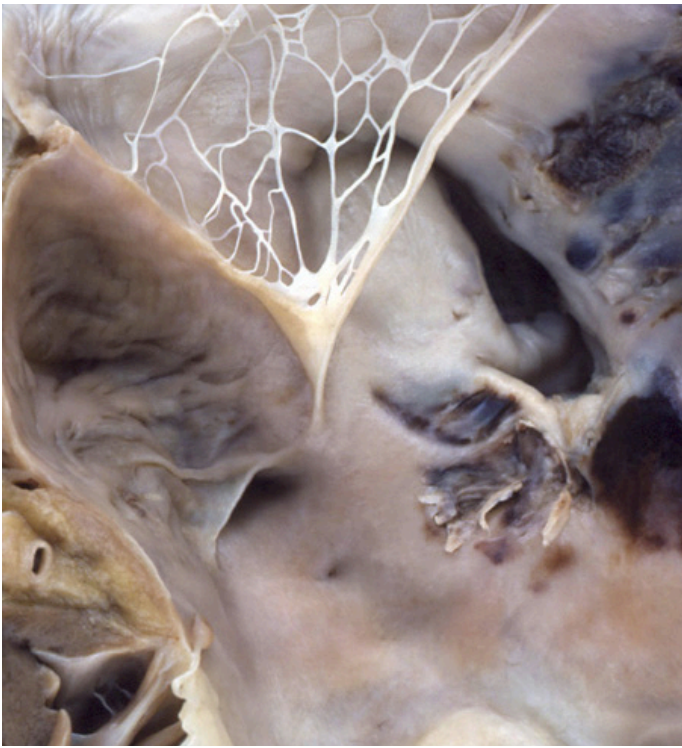
R-83-88 inferior caval defect (remote postoperative). Right side. In this elderly, adult heart, a portion of the Eustachian valve has been sutured to the margin of an interatrial defect, which communicates the left atrium. The ostium of the coronary sinus is enlarged but in the usual position. A single chord of tissue represents the Thebesian valve. The tricuspid valve is thickened.

R-83-88 inferior caval defect (remote postoperative). Right side. In this elderly, adult heart, a portion of the Eustachian valve has been sutured to the margin of an interatrial defect, which lies below and separate from the intact oval fossa. Dehiscence of part of the suture line leaves a residual communication with the left atrium. The ostium of the coronary sinus is enlarged but in the usual position. A single chord of tissue represents the Thebesian valve. The tricuspid valve is thickened.

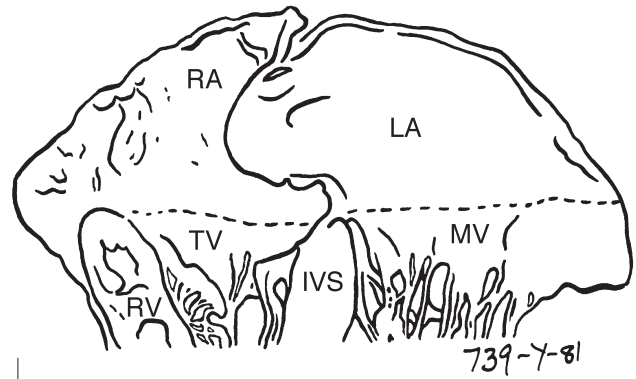


R-83-88 inferior caval defect (remote postoperative). Right side. In this elderly, adult heart, a portion of the Eustachian valve has been sutured to the margin of an interatrial defect, which lies below and separate from the intact oval fossa. Dehiscence of part of the suture line leaves a residual communication with the left atrium. The ostium of the coronary sinus is enlarged but in the usual position. A single chord of tissue represents the Thebesian valve.

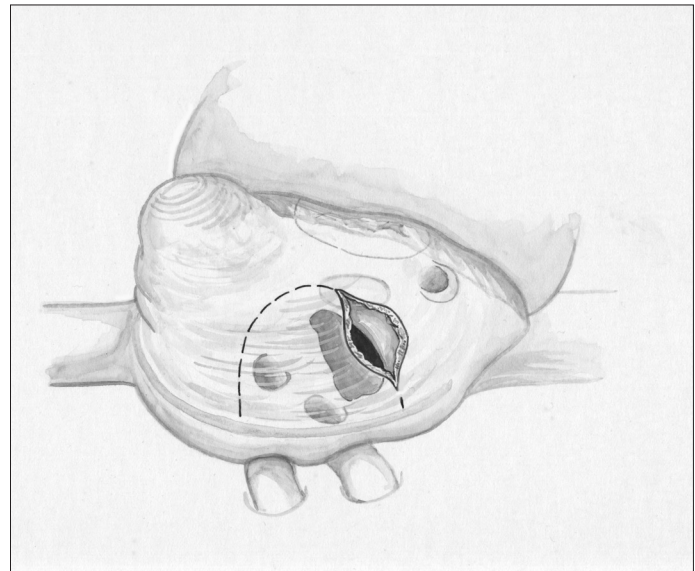
Error



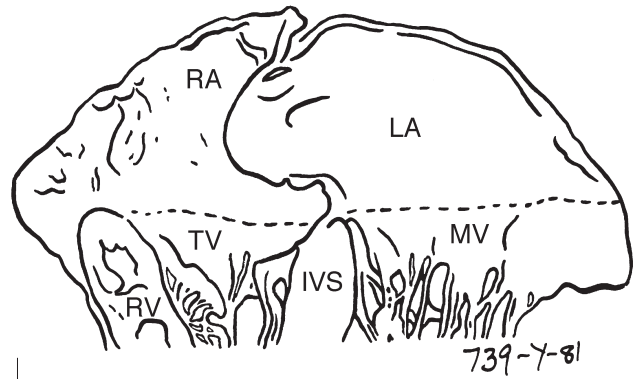
R-83-88 inferior caval defect (remote postoperative). Right side. In this elderly, adult heart, a portion of the Eustachian valve has been sutured to the margin of an interatrial defect, which lies below and separate from the intact oval fossa. Dehiscence of part of the suture line leaves a residual communication with the left atrium. The ostium of the coronary sinus is enlarged but in the usual position. A single chord of tissue represents the Thebesian valve. The tricuspid valve is thickened.



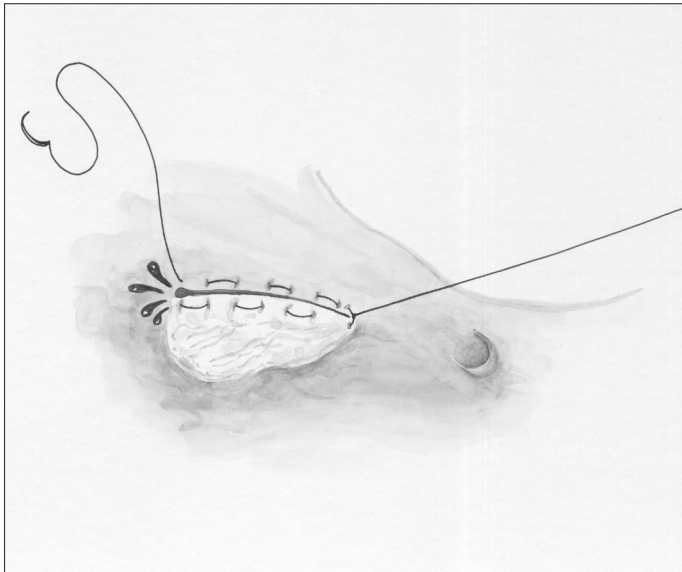
R-83-88 inferior caval defect (remote postoperative). Right side. In this elderly, adult heart, a portion of the Eustachian valve has been sutured to the margin of an interatrial defect, which communicates with the left atrium. The ostium of the coronary sinus is enlarged but in the usual position. A single chord of tissue represents the Thebesian valve. The tricuspid valve is thickened. The ostium of the coronary sinus is enlarged but in the usual position. A single chord of tissue represents the Thebesian valve. The ostium of the coronary sinus is enlarged but in the usual position. A single chord of tissue represents the Thebesian valve. The ostium of the coronary sinus is enlarged but in the usual position. A single chord of tissue represents the Thebesian valve.



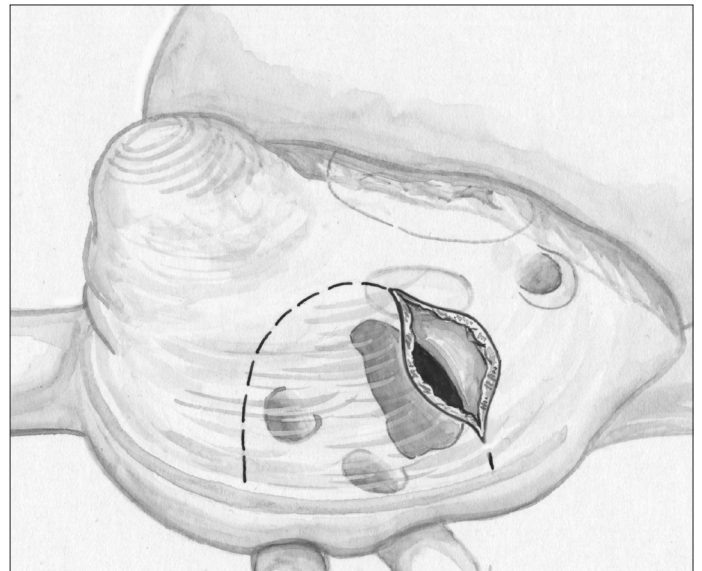
R-83-88 inferior caval defect (remote postoperative). Right side. In this elderly, adult heart, a portion of the Eustachian valve has been sutured to the margin of an interatrial defect, which lies below and separate from the intact oval fossa. Dehiscence of part of the suture line leaves a residual communication with the left atrium. The ostium of the coronary sinus is enlarged but in the usual position. A single chord of tissue represents



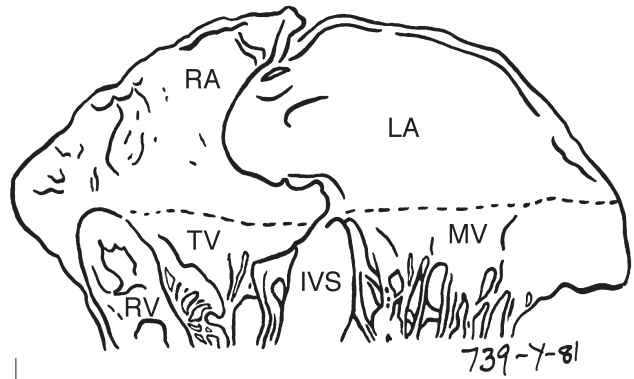
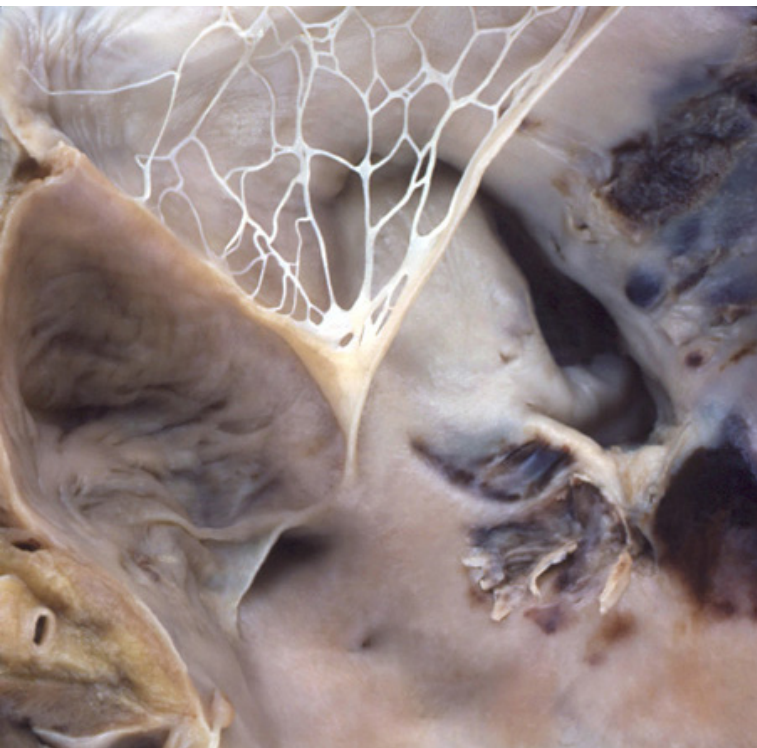
R-83-88 inferior caval defect (remote postoperative). Right side. In this elderly, adult heart, a portion of the Eustachian valve has been sutured to the margin of an interatrial defect, which lies below and separate from the intact oval fossa. Dehiscence of part of the suture line leaves a residual communication with the left atrium. The ostium of the coronary sinus is enlarged but in the usual position. A single chord of tissue represents the Thebesian valve. The tricuspid valve is thickened.



R-83-88 inferior caval defect (remote postoperative). Right side. In this elderly, adult heart, a portion of the Eustachian valve has been sutured to the margin of an interatrial defect, which lies below and separate from the intact oval fossa. Dehiscence of part of the suture line leaves a residual communication with the left atrium. The ostium of the coronary sinus is enlarged but in the usual position. A single chord of tissue represents the Thebesian valve. The tricuspid valve is thickened.

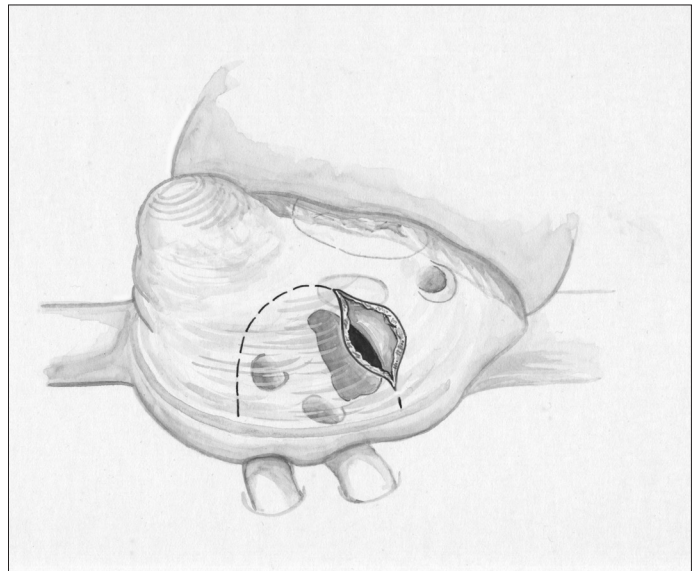


R-83-88 inferior caval defect (remote postoperative). Right side. In this elderly, adult heart, a portion of the Eustachian valve has been sutured to the margin of an interatrial defect,

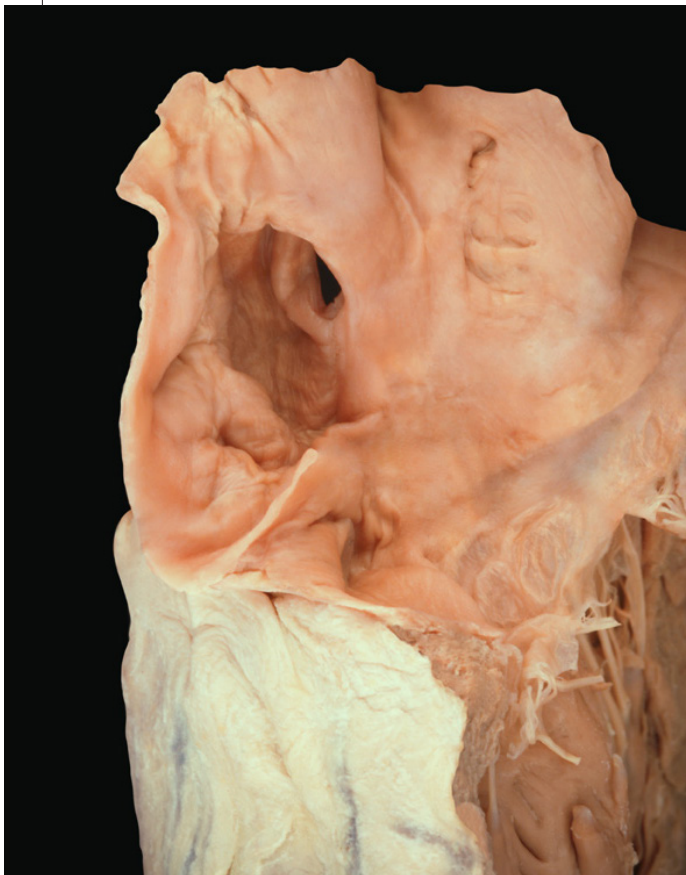


R-83-88 inferior caval defect (remote postoperative). Right side. In this elderly, adult heart, a portion of the Eustachian valve has been sutured to the margin of an interatrial defect, which lies below and separate from the intact oval fossa. Dehiscence of part of the suture line leaves a residual communication with the left atrium. The ostium of the coronary sinus is enlarged but in the usual position. A single chord of tissue represents the Thebesian valve. The tricuspid valve is thickened.

R-83-88 inferior caval defect (remote postoperative). Right side. In this elderly, adult heart, a portion of the Eustachian valve has been sutured to the margin of an interatrial defect, which lies below and separate from the intact oval fossa. Dehiscence of part of the suture line leaves a residual communication with the left atrium. The ostium of the coronary sinus is enlarged but in the usual position. A single chord of tissue represents the Thebesian valve. The tricuspid valve is thickened.



R-83-88 inferior caval defect (remote postoperative). Right side. In this elderly, adult heart, a portion of the Eustachian valve has been sutured to the margin of an interatrial defect, which lies below and separate from the intact oval fossa. Dehiscence of part of the suture line leaves a residual communication with the left atrium. The ostium of the coronary sinus is enlarged but in the usual position. A single chord of tissue represents



USA / PORTUGAL

%

	Anomalies		Connection
	2014	2015	2014
New York	10	1,78	33
Lisbon	14,8	10	67
London	0333	9	0
Tokyo	0,66	0,8	22

Convention and Visitors Bureau's official tourist guide to Tokyo
 FONTE: HSM

Coronary Arterial Anomalies

USA	PORTUGAL
Extracardiac Anomalies	
Four-chambered	
Ventriculo-arterial Connections	
Univentricular	
Coronary Arterial	
AtrioventricuVentriculo-arterial	
Dur-chambered	
Connections	

FONTE: HSM



Chantal de Mello
 Foundation

USA / PORTUGAL

%

	Anomalies		Connection
	2014	2015	2014
New York	10	1,78	33
Lisbon	14,8	10	67
London	0333	9	0
Tokyo	0,66	0,8	22

Convention and Visitors Bureau's official tourist guide to Tokyo
 FONTE: HSM

Coronary Arterial Anomalies

USA	PORTUGAL
Extracardiac Anomalies	
Four-chambered	
Ventriculo-arterial Connections	
Univentricular	
Coronary Arterial	
AtrioventricuVentriculo-arterial	
Dur-chambered	
Connections	

FONTE: HSM



**Champalimaud
 Foundation**

Drive

roxjorjor@gmail.com

usaportugal



Introduction

Developed to integrate cardiac anatomy with surgical repair by reviewing individual heart defects within an easy-to-follow reference format, *A Practical Atlas of Congenital Heart Disease* is designed to allow the reader to identify the **Bold diagnostic anatomic** features and to emphasize important surgical landmarks, *italic allowing readers to differentiate* the infinitely variable morphology in clinical practice. The anatomic pathologist will also gain an understanding of surgical repairs native hearts.

For virtually all anatomical ***Bold italic specimens*** are shown in the anatomical position, while the surgical figures are shown as they would be seen operatively. *Italic color This enables the reader* to practice mental imaging of the morphologic and spatial relationships that are integral to every malformation, the action tissue is indicated.

The book provides examples of malformations and the relevant surgical considerations, reflecting clinical practice: anatomical specimens are shown in the anatomical position, while the surgical figures are shown as they would be seen operatively. This enables the reader to practice mental imaging of the morphological

R-83-88 inferior caval defect (remote postoperative). Right side. In this elderly, adult heart, a portion of the Eustachian valve has been sutured to the margin of an interatrial defect, which lies below and separate from the intact oval fossa. Dehiscence of part of the suture line leaves a residual communication with the left atrium. The ostium of the coronary sinus is enlarged but in the usual position. A single chord of tissue represents the Thebesian valve. The tricuspid valve is thickened.

Roxane McKay · Audrey Smith · Joseph Dearani

A Practical Atlas of Congenital Heart Disease II



Publisher · www.congenitalheartdisease.com · June 2016